

AN ISO 9001:2015 CERTIFIED COMPANY



AGRICULTURE  
is REAL BREATH



INSECTICIDE | FUNGICIDE | HERBICIDE | PGR

## ABOUT US

SIPALI CHEMICAL PVT LTD is a global in innovative advanced solution for agriculture in the nutrients, soil health, crop protection and biological space. we serve the agricultural sector through technological innovations to ensure that balanced nutritious food is produced in farm and provide better soil and human health.

The company launches New Agro products in to the market, company satisfies all the need of farmers for various changes as well as give new molecules with new technology

Company always thinks of farmer's development in Agriculture with Ethics and discipline. The Quality it self Speaks



Higher Crop Yield



Quality Produce



Cost Effective

“ Trust Yours ,Quality ours”

**MOTTO**



DIAPENTHIURON 47% +  
BIFENTHRIN 9.4% SC  
PACKING : 1/500/250 ML

**PYRIN**



PYRIPROXYFEN 10% +  
BIFENTHRIN 10% EC  
PACKING : 1/500/250 ML

**NOVATE**



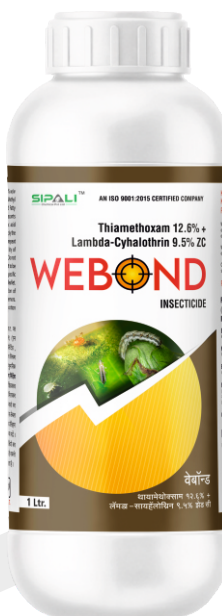
NOVALURAN 5.25% +  
EMAMECTIN BENZOATE 0.9% SC  
PACKING : 1/500/250 ML

**KENJI ULTRA**



CHLORANTRANILIPROLE 9.3% +  
LAMBDCYHALOTHRIN 4.6% ZC  
PACKING : 1/500/250 ML

**WEBOND**



THIAMETHOXAM 12.6% +  
LAMBDA-CYHALOTHRIN 9.5% ZC  
PACKING : 1/500/250 ML

**LUCASO**



TOLFENPYRAD 15% EC  
PACKING : 1/500/250/100 ML

**DELTON**



DELTA-METHRIN 11% EC  
PACKING : 1/500/250/100 ML

**SIPOXAM PLUS**



THIAMETHOXAM 30% FS  
PACKING : 1/500/250 ML

**ABASIL**



ABAMECTIN 1.9% EC  
PACKING : 1/500/250/100 ML

**EMATIN**



EMAMECTIN BENZOATE 1.9% EC  
PACKING : 1/500/250/100 ML

**SIMIDA**



IMIDACLOPRID 30.5 % SC  
PACKING : 1/500/250/100 ML

**LIZA**



LAMBDA CYHALOTHRIN 4.9% CS  
PACKING : 1/500/250 ML

**KENJI**



CHLORANTRANILIPROLE 18.5% SC  
PACKING : 300/150/60/30 ML

**KENJI PLUS**



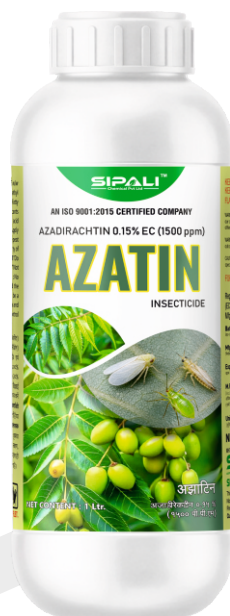
CHLORANTRANILIPROLE 47.85% SC  
PACKING : 200/100/50 ML

**MEDAL**



HEXYTHIAZOX 5.45% EC  
PACKING : 1/500/250 ML

**AZATIN**



AZADIRACHTIN 0.15% EC  
(1500 PPM) MIN  
PACKING : 1/500/250 ML

**SIMITE**



PROPARGITE 57% EC  
PACKING : 1/500/250 ML

**CYRIN 25**



CYPERMETHRIN 25% EC  
PACKING : 1/500/250 ML

**CYQUINE**



CYPERMETHRIN 3% +  
QUINALPHOS 20% EC  
PACKING : 1/500/250 ML

**SALSTAR**



BIFENTHRIN 10% EC  
PACKING : 1/500/250 ML

**VOLGA**



CHLORPYRIPHOS 20% EC  
PACKING : 1/500/250 ML

**VOLGA-505**



CHLORPYRIPHOS 50% +  
CYPERMETHRIN 5% EC  
PACKING : 1/500/250 ML

**ETHORIN**



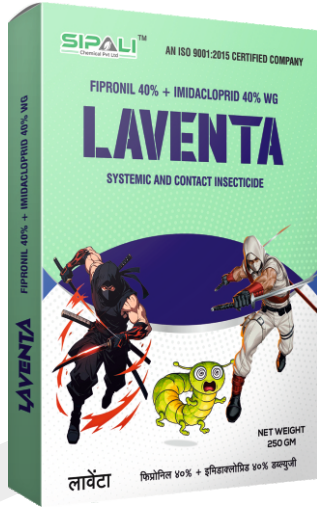
ETHION 40% +  
CYPERMETHRIN 5% EC  
PACKING : 1/500/250 ML

**PROTECT SUPER**



PROFENOFOS 40% +  
CYPERMETHRIN 4% EC  
PACKING : 5/1/500/250 ML

**LAVENTA**



FIPRONIL 40% +  
IMIDACLOPRID 40% WG  
PACKING : 250/100/40 GM

**OSHIM**



DINOTEFURAN 20% SG  
PACKING : 500/250/100 GM

**SIPOXAM STAR**



THIAMETHOXAM 75% SG  
PACKING : 500/250/100 GM

**EMASU**



EMAMECTIN BENZOATE 5% SG  
PACKING : 500/250/100/50 GM

**SWARD**



ACETAMAPRID 20% SP  
PACKING : 500/250/100 GM

**SIPOXAM**



THIAMETHOXAM 25% WG  
PACKING : 500/250/100 GM

**AXON STAR**



ACEPHATE 50% +  
IMIDACLOPRID 1.8% SP  
PACKING : 1/500/250 GM

**AXON**



ACEPHATE 75% SP  
PACKING : 1/500/250 GM

**AXON PLUS**



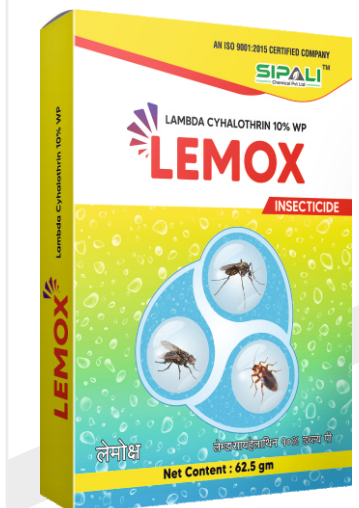
BUPROFEZIN 15% +  
ACEPHATE 35% WP  
PACKING : 1/500/250 GM

**SITAP**



CARTAP HYDROCHLORIDE 50% SP  
PACKING : 500/250/100 GM

**LEMOX**



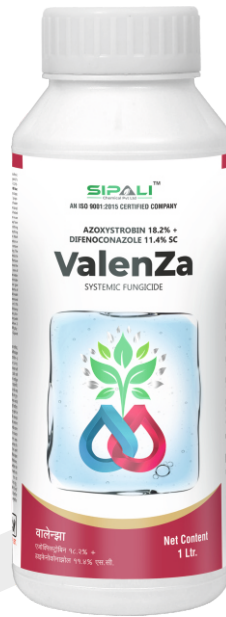
LAMBDA CYHALOTHRIN 10% WP  
PACKING : 62.5 GM

**ASTER**



KRESOXIM-METHYL 44.3% SC  
PACKING : 1/500/250 ML

**VALENZA**



AZOXYSTROBIN 18.2% +  
DIFENOCONAZOLE 11.4% SC  
PACKING : 1/500/250 ML

**AZOTOXY**



AZOXYSTROBIN 11% +  
TEBUCONAZOLE 18.3% SC  
PACKING : 1/500/250 ML

**TRICLONE**



AZOXYSTROBIN 16.7% +  
TRICYCLAZOLE 33.3% SC  
PACKING : 1/500/250 ML

**PIZOLE PLUS**



PICOXYSTROBIN 7.05% +  
PROPICONAZOLE 11.71% SC  
PACKING : 1/400/200 ML

**MACE**



AZOXYSTROBIN 4.8% +  
CHLOROTHALONIL 40.0% SC  
PACKING : 600/300/150 ML

**WEZOLE**



PROPICONAZOLE 13.9% +  
DIFENOCONAZOLE 13.9% EC  
PACKING : 1/500/250 ML

**PIZOLE**



PICOXYSTROBIN 6.78% +  
TRICYCLAZOLE 20.33% SC  
PACKING : 1/400/200 ML

**VITOX ULTRA**



CARBOXIN 17.5% +  
THIRAM 17.5% FF  
PACKING : 1/500/250 ML

**SUL-55**



SULPHUR 55.16% SC  
PACKING : 5/1/500 ML

**VALINO**



VALIDAMYCIN 3% L  
PACKING : 1/500/250 ML

**HEXANIL**



HEXAONAZOLE 5% SC  
PACKING : 5/1/500 ML

**ASTER PLUS**



KRESOXIM-METHYL 15% +  
CHLOROTHALONIL 56% WG  
PACKING : 1/500/250 GM

**VITOX POWER**



CARBOXIN 37.5% +  
THIRAM 37.5% WS  
PACKING : 1/500/250/100 GM

**MEXIL**



METALAXYL 35% W.S.  
PACKING : 1/500/250 GM

**HILTOP**



THIOPHANATE METHYL 70% WP  
PACKING : 1/500/250 GM

**MEXIL PLUS**



METALAXYL 8% +  
MANCOZEB 64% WP  
PACKING : 1/500/250 GM

**TONSIL**



TEBUCONAZOLE 10% +  
SULPHUR 85% WG  
PACKING : 1/500/250 GM

**CAPXA**



CAPTAN 70% +  
HEXACONAZOLE 5% WP  
PACKING : 1/500/250 GM

**SILONYL**



CHLOROTHALONIL 75% WP  
PACKING : 1/500/250 GM

**CYNO-72**



CYMOXANIL 8% +  
MANCOZEB 64% WP  
PACKING : 1200/600/300 GM

**TRICOLE**



TRICYCLAZOLE 75 % WP  
PACKING : 120 GM

**CIMPO**



CARBENDAZIM 12% +  
MANCOZEB 63% WP  
PACKING : 1/500/250 GM

**CAZIM**



CARBENDAZIM 50% WP  
PACKING : 1/500/250 GM

**SLITOX**



COPPER OXYCHLORIDE  
CONTAINING COPPER  
CONTENTS 50.00% WP  
PACKING : 500 GM

**SCPL M-45**



MANCOZEB 75 % WP  
PACKING : 1/500/250 GM

**SUL-80**



SULPHUR 80% WDG  
PACKING : 1/500 GM

**SIMAZE SUPER**



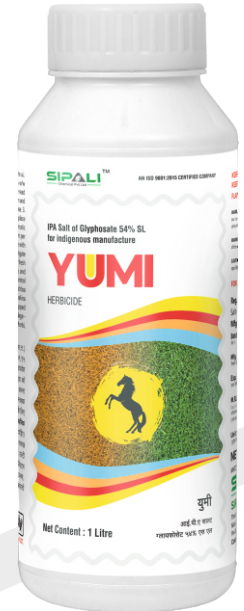
IMAZETHAPYR 70% WG  
PACKING : 100/50 GM

**HAKURA**



QUIZALOFOP ETHYL 10% EC  
PACKING : 1/500/250/100 ML

**YUMI**



GLYPHOSATE 54% SL  
PACKING : 1/500 ML

**KOTON**



PARAQUAT DICHLORIDE 24% SL  
PACKING : 1/500 ML

**PENDILIS**



PENDIMETHALIN 30% EC  
PACKING : 5/1/500 ML

**SIMAZE**



IMAZETHAPYR 10% SL  
PACKING : 1/500/250 ML

**WEED WAR**



2,4,D AMINE SALT 58% SL  
PACKING : 1/500/250 ML

**SLINTON**



GLYPHOSATE 41% SL  
PACKING : 5/1/500 ML

**GLUFOWIN**



GLUFOSINATE AMMONIUM  
13.5 % SL  
PACKING : 1/500 ML

**PENDILIS SUPER**



PENDIMETHALIN 38.7% CS  
PACKING : 700/350 ML

**SCPL-71**



AMMONIUM SALT OF  
GLYPHOSATE 71% SG  
PACKING : 100 GM

**ATRA-50**



ATRAZINE 50% WP  
PACKING : 1/500/250 GM

**CLODISIL**



CLODINAFOP  
PROPARGYL 15 % WP  
PACKING : 160 GM

**SGRIP**



METSULFURON METHYL 20% WP  
PACKING : 8 GM

**GOLSER**



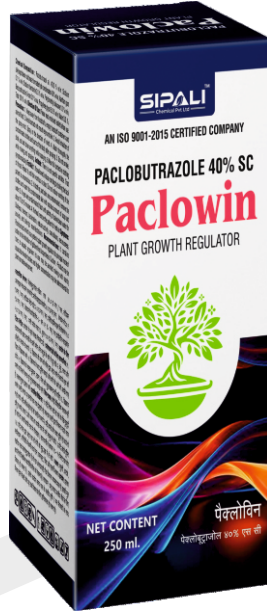
OXYFLUORFEN 23.5% EC  
PACKING : 500/250/100/50 ML

**SIZU**



GIBBERELIC ACID 0.001% L  
PACKING : 1/500/250 ML

**PACLOWIN**



PACLOBUTRAZOLE 40% SC  
PACKING : 250/100/50 ML

**SICULAN**



TRIACONTANOL EW 0.1% MIN  
PACKING : 1/500/250 ML

**HUMI PLUS**



HUMATES 12.5% (LIQUID)  
PACKING : 5/1/500 ML

**BLACK GOLD**



HUMIC AND FULVIC ACID 76%  
PACKING : 1/500/250 GM

**SUJUTA**



HUMIC AND FULVIC ACID 25.05%  
PACKING : 1/500/250 ML

**SITONIK**



MIXTURE OF HUMIC ACID AND  
SEAWEED EXTRACT  
PACKING : 1/500/250 GM

**SYNOVITA**



MIXTURE OF SEAWEED EXTRACT;  
HUMIC AND FULVIC ACID, AMINO  
ACIDS AND VITAMINS  
PACKING : 1/500/250 ML

**ROOT POWER**



SUPER POTASSIUM  
HUMATE 98%  
PACKING : 1/500 GM

**SYNOVITA  
GRANULES**



MIXTURE OF HUMIC ACID AND  
SEAWEED EXTRACT (GRANULES)  
PACKING : 25/10 KG

**SOIL POWER GR**



SEAWEED EXTRACT BASED  
ORGANIC GRANULES  
PACKING : 25/10 KG

**SILWET PLUS**



SILICON BASED NON-IONIC  
TANK-MIX ADJUVANT  
PACKING : 250/100 ML

**SILICA**



SILICONE BASED SUPERSPREADER  
ACTIVATOR  
PACKING : 250/100 ML

**MYCOSIL**



MYCORRHIZAL BIOFERTILISERS  
PACKING : 4 KG

**SCPL-BLACK CARBON**



PGR SOIL BASE CARBON  
PACKING : 1/500/250 ML

**CALBORN SUPER**



CONCENTRATED LIQUID  
CALCIUM 11%  
PACKING : 1/500 ML

# AGRICULTURE is REAL BREATH



**SIPALI**<sup>TM</sup>  
Chemical Pvt Ltd

## **SIPALI CHEMICAL PVT LTD**

Third Floor, B/13, Sardar Patel Mall, B/S Diamond Mill,  
Nicol Gam Road, Nikol, Ahmedabad, Gujarat (India) Pin-382350

**Email :** [sipalichemical@gmail.com](mailto:sipalichemical@gmail.com) **Web :** [www.sipalichemicalpvtltd.com](http://www.sipalichemicalpvtltd.com)  
**Customer Care :** +91 9510429397